

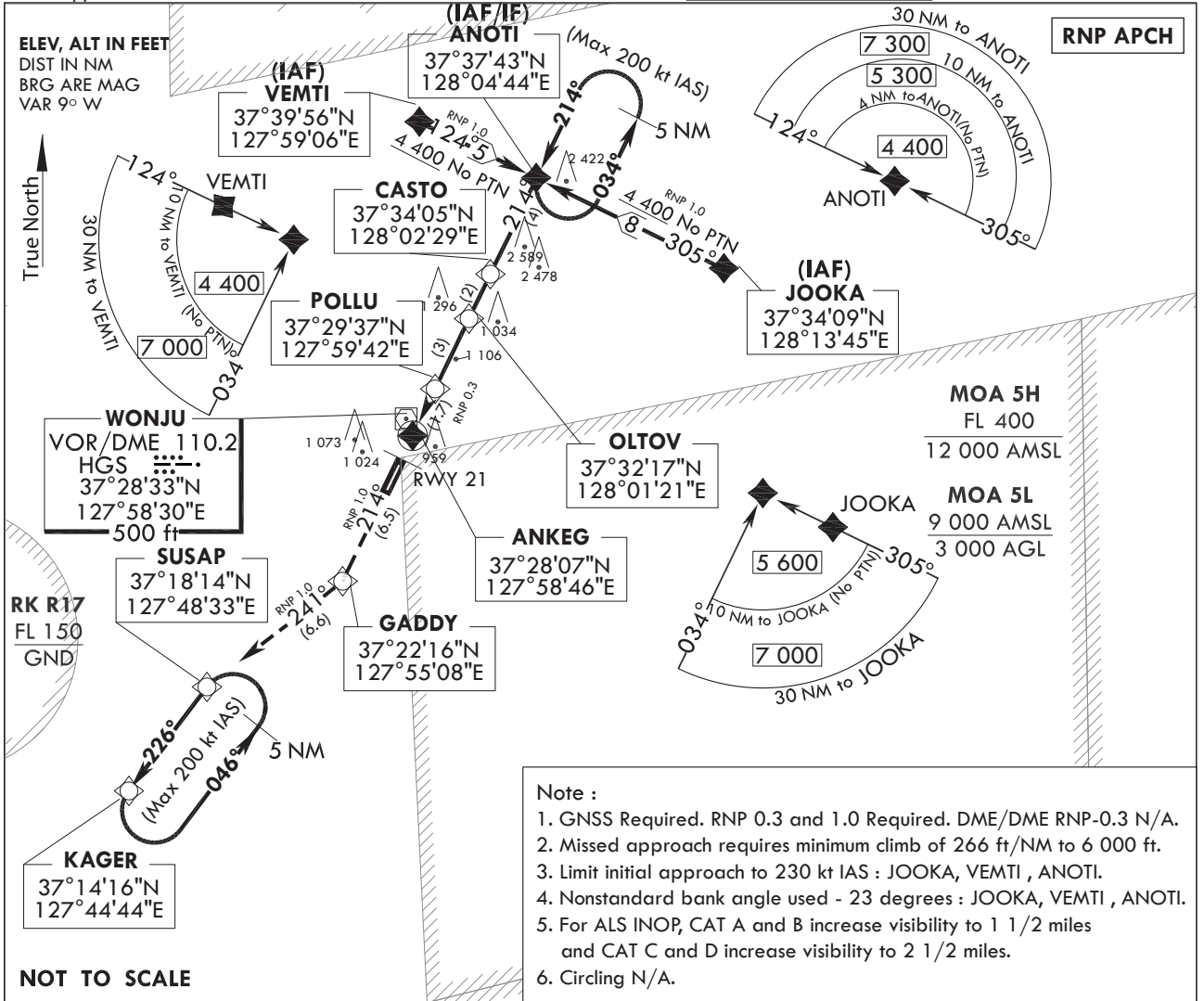
**INSTRUMENT  
APPROACH  
CHART**

**AERODROME ELEV 330 ft**  
HEIGHTS RELATED TO  
THR RWY 21 - ELEV 330 ft

WONJU APP	130.2
	234.4 255.0
WONJU TWR	126.2 118.325
	236.6 265.5

**WONJU/Wonju(RKNW) |**  
**RNP RWY 21**

Note : Approach under U.S TERPS.



- Note :**
- GNSS Required. RNP 0.3 and 1.0 Required. DME/DME RNP-0.3 N/A.
  - Missed approach requires minimum climb of 266 ft/NM to 6 000 ft.
  - Limit initial approach to 230 kt IAS : JOOKA, VEMTI , ANOTI.
  - Nonstandard bank angle used - 23 degrees : JOOKA, VEMTI , ANOTI.
  - For ALS INOP, CAT A and B increase visibility to 1 1/2 miles and CAT C and D increase visibility to 2 1/2 miles.
  - Circling N/A.

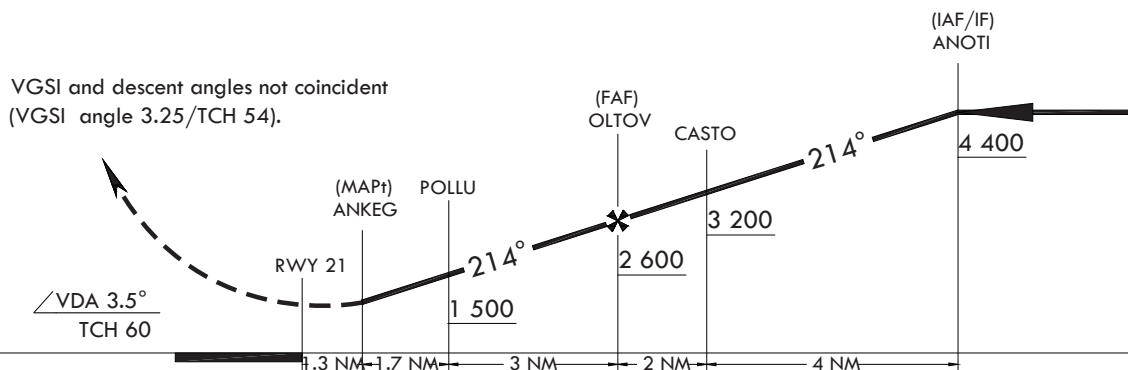
**NOT TO SCALE**

※ VGSi : Visual Glide Slope Indicator  
VPA : Vertical Path Angle  
TCH : Threshold Crossing Height  
No PTN : No Procedure Turn Required

**TRANSITION ALT 14 000**  
**TRANSITION LVL FL 140**

**MISSED APPROACH**

Climb to 6 000 ft on track 214° to GADDDY, then track 241° to SUSAP, then track 226° to KAGER and hold.



CATEGORY	A	B	C	D
RNAV/VNAV DA	N/A			
RNAV MDA	1 200/60 870(900-11/8)	1 200-2 870(900-2)		
CIRCLING	N/A			

Change : Amended phrase(wonju → Wonju).

WONJU/Wonju(RKNW)  
RNP RWY 21

AERONAUTICAL DATA TABULATION

Instrument Approach Procedure Coding Tables

RNP RWY 21

Serial Number	Path Descriptor	Waypoint Identifier	Fly -Over	Course/Track ° M(° T)	Distance (NM)	Turn Direction	Altitude (ft)	Speed (kt)	Coordinates	VPA /TCH	Navigation specification	Remarks
001	-	JOOKA	-	-	-	-	+5 600	-230	37°34'08.84"N 128°13'45.27"E	-	RNP APCH	IAF
002	TF	ANOTI	-	305(296.5)	8.0	-	+4 400	-230	37°37'42.86"N 128°04'44.26"E	-	RNP APCH	IAF/IF

RNP RWY 21

Serial Number	Path Descriptor	Waypoint Identifier	Fly -Over	Course/Track ° M(° T)	Distance (NM)	Turn Direction	Altitude (ft)	Speed (kt)	Coordinates	VPA /TCH	Navigation specification	Remarks
001	-	VEMTI	-	-	-	-	+4 400	-230	37°39'56.27"N 127°59'05.69"E	-	RNP APCH	IAF
002	TF	ANOTI	-	124(116.3)	5.0	-	+4 400	-230	37°37'42.86"N 128°04'44.26"E	-	RNP APCH	IAF/IF
003	TF	CASTO	-	214(206.4)	4.0	-	+3 200	-230	37°34'05.59"N 128°02'28.87"E	-	RNP APCH	-
004	TF	OLTOV	-	214(206.4)	2.0	-	+2 600	-	37°32'16.91"N 128°01'21.18"E	-	RNP APCH	FAF
005	TF	POLLU	-	214(206.4)	3.0	-	+1 500	-	37°29'37.54"N 127°59'42.09"E	-	RNP APCH	-
006	TF	ANKEG	FO	214(206.4)	1.7	-	1 200	-	37°28'06.75"N 127°58'45.69"E	-	RNP APCH	MAPt

MISSED Approach

Serial Number	Path Descriptor	Waypoint Identifier	Fly -Over	Course/Track ° M(° T)	Distance (NM)	Turn Direction	Altitude (ft)	Speed (kt)	Coordinates	VPA /TCH	Navigation specification	Remarks
001	TF	ANKEG	-	-	-	-	-	-	37°28'06.75"N 127°58'45.69"E	-	RNP APCH	MAPt
002	TF	GADDY	-	214(206.3)	6.5	-	-	-	37°22'16.20"N 127°55'08.33"E	-	RNP APCH	CG 266 ft/NM to 6 000 ft
003	TF	SUSAP	-	241(232.6)	6.6	-	-	-	37°18'14.41"N 127°48'32.66"E	-	RNP APCH	CG 266 ft/NM to 6 000 ft
004	TF	KAGER	-	226(217.6)	5.0	-	6 000	-	37°14'16.30"N 127°44'43.60"E	-	RNP APCH	-

HOLDING Data

Serial Number	Path Descriptor	Waypoint Identifier	Fly -Over	Course/Track ° M(° T)	Distance (NM)	Turn Direction	Altitude (ft)	Speed (kt)	Coordinates	VPA /TCH	Navigation specification	Remarks
001	TF	ANOTI	-	214(206.4)	5.0	L	4 400	-200	37°34'08.84"N 128°13'45.27"E	-	RNP APCH	Hold at DEKIL NE left Turn 214° Inbound 5 NM Leg.
002	TF	KAGER	-	226(217.6)	5.0	L	6 000	-200	37°37'42.86"N 128°04'44.26"E	-	RNP APCH	Hold at KAJAN NE Left Turn 226° Inbound 5 NM Leg.

Change : Amended phrase(wonju → Wonju).

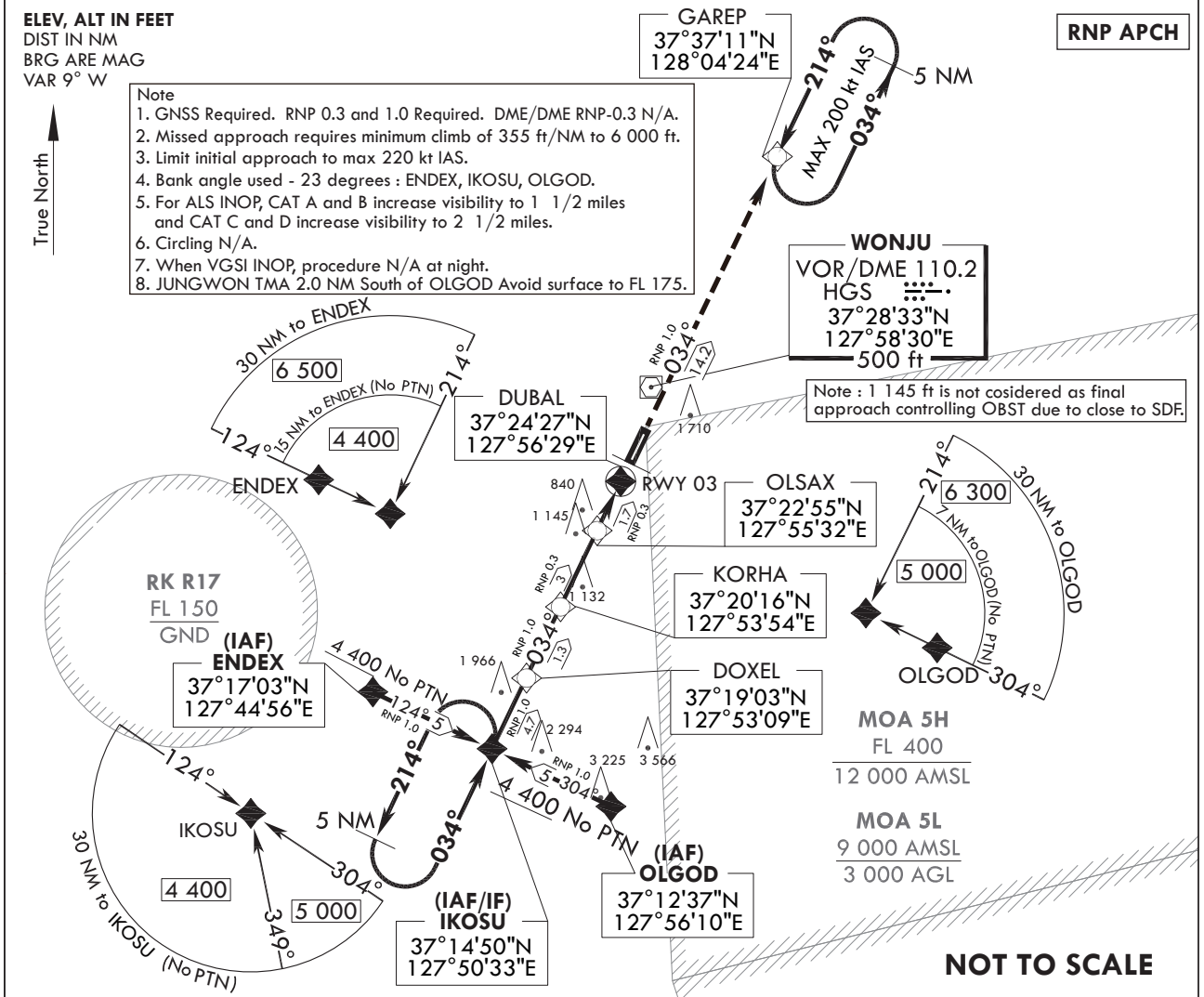
**INSTRUMENT  
APPROACH  
CHART**

**AERODROME ELEV 330 ft**  
HEIGHTS RELATED TO  
THR RWY 03 - ELEV 325 ft

WONJU APP	130.2
	234.4 255.0
WONJU TWR	126.2 118.325
	236.6 265.5

**WONJU/Wonju(RKNW)**  
**RNP RWY 03**

Note : Approach under U.S.TERPS.

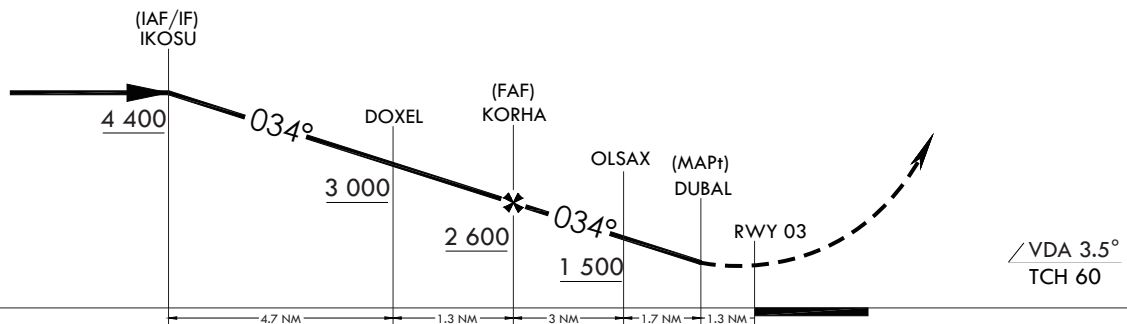


※ VGSI : Visual Glide Slope Indicator  
VPA : Vertical Path Angle  
TCH : Threshold Crossing Height  
No PTN : No Procedure Turn Required

TRANSITION ALT 14 000  
TRANSITION LVL FL 140

**MISSED APPROACH**

Climb to 6 000 ft on track 034° to GAREP and HOLD.



CATEGORY	A	B	C	D
RNAV/VNAV DA			N/A	
RNAV MDA	1 160/60	835(900-11/8)	1 160-17/8	835(900-17/8)
CIRCLING			N/A	

Change : Withdrawal of information for VGSI.

WONJU/wonju(RKNW)  
RNP RWY 03

AERONAUTICAL DATA TABULATION

Instrument Approach Procedure Coding Tables

Serial Number	Path Descriptor	Waypoint Identifier	Fly -Over	Course/Track ° M(° T)	Distance (NM)	Turn Direction	Altitude (ft)	Speed (kt)	Coordinates	VPA /TCH	Navigation specification	Remarks
RNP RWY 03												
001	-	ENDEX	-	-	-	-	+4 400	-220	37°17'03.21"N 127°44'55.61"E	-	RNP APCH	IAF
002	TF	IKOSU	-	124(116.2)	5.0	-	+4 400	-220	37°14'50.45"N 127°50'32.84"E	-	RNP APCH	IAF/IF
RNP RWY 03												
001	-	OLGOD	-	-	-	-	+5 000	-220	37°12'37.42"N 127°56'09.75"E	-	RNP APCH	IAF
002	TF	IKOSU	-	304(296.3)	5.0	-	+4 400	-220	37°14'50.45"N 127°50'32.84"E	-	RNP APCH	IAF/IF
003	TF	DOXEL	-	034(026.3)	4.7	-	+3 000	-220	37°19'03.51"N 127°53'09.14"E	-	RNP APCH	-
004	TF	KORHA	-	034(026.3)	1.3	-	+2 600	-	37°20'15.88"N 127°53'53.87"E	-	RNP APCH	FAF
005	TF	OLSAX	-	034(026.3)	3.0	-	+1 500	-	37°22'55.32"N 127°55'32.56"E	-	RNP APCH	-
006	TF	DUBAL	FO	034(026.3)	1.7	-	1 160	-	37°24'26.96"N 127°56'29.33"E	-	RNP APCH	MAPt
MISSED Approach												
001	-	DUBAL	-	-	-	-	-	-	37°24'26.96"N 127°56'29.33"E	-	RNP APCH	MAPt
002	TF	GAREP	-	034(026.3)	14.2	-	+6 000	-	37°37'10.88"N 128°04'24.31"E	-	RNP APCH	CG 355 ft/NM to 6 000 ft
HOLDING Data												
001	TF	IKOSU	-	034(026.3)	5.0	L	4 400	-200	37°14'50.45"N 127°50'32.84"E	-	RNP APCH	Hold at MADAE SW Left Turn 034° Inbound 5 NM leg.
002	TF	GAREP	-	034(026.3)	5.0	L	6 000	-200	37°37'10.88"N 128°04'24.31"E	-	RNP APCH	Hold at GAREP NE Left Turn 214° Inbound 5 NM leg.

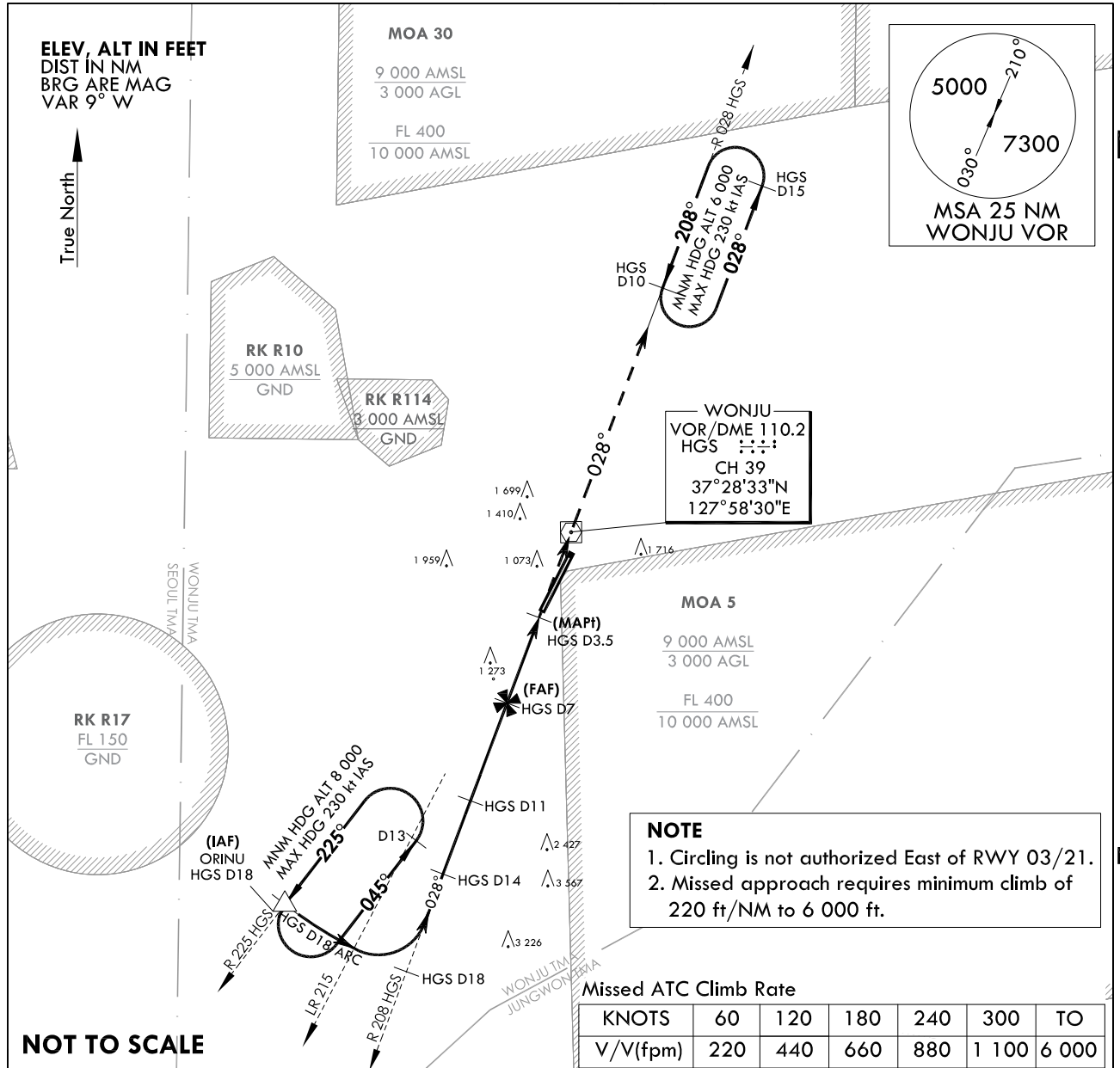
**INSTRUMENT  
APPROACH  
CHART**

**AERODROME ELEV 330 ft**  
HEIGHTS ELEV TDZ 325 ft

WONJU APP	130.2	234.4	255.0
WONJU TWR	265.5	118.325	236.6
	236.6	126.2	

**WONJU/Wonju (RKNW)  
VOR/DME A**

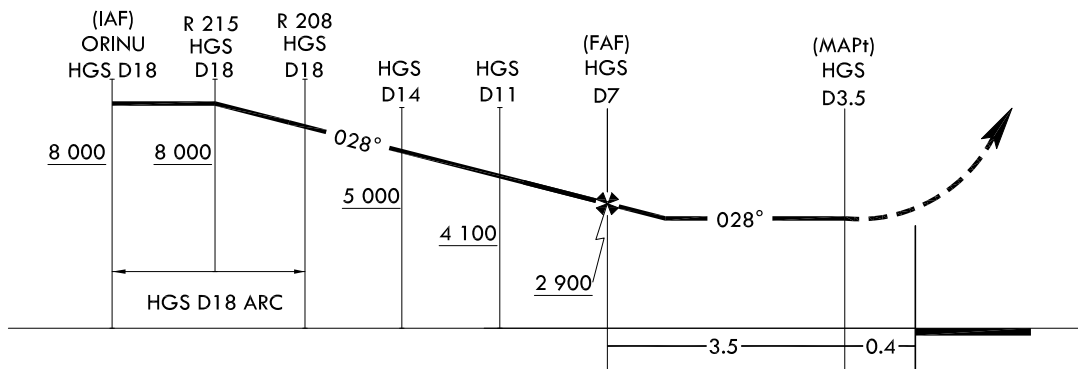
Note : Approach and circle to land under U.S. TERPS.



TRANSITION ALT 14 000  
TRANSITION LVL FL 140

**MISSED APPROACH**

Climb to 6 000 ft via HDG 028° to HGS and R 028 HGS to HGS 10 DME and hold, continue climb-in-hold to 6 000 ft.



CATEGORY	A	B	C	D	E
CIRCLING	1 540-1 1/4 1 210(1 300-1 1/4)	1 540-1 1/4 1 210(1 300-1 1/2)	1 780-3 1 450(1 500-3)	2 060-3 1 730(1 800-3)	N/A

\* EXPANDED CIRCLING APPROACH MANEUVERING AIRSPACE RADIUS

Change : Information of fix name(GARMA → ORINU).

**INTENTIONALLY**

**LEFT**

**BLANK**

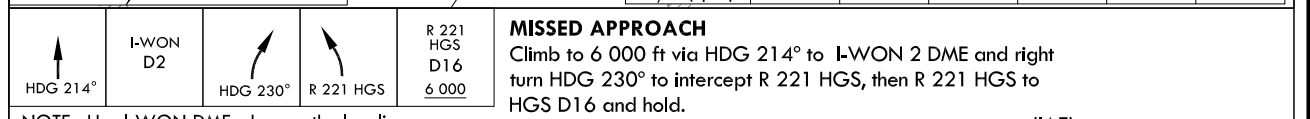
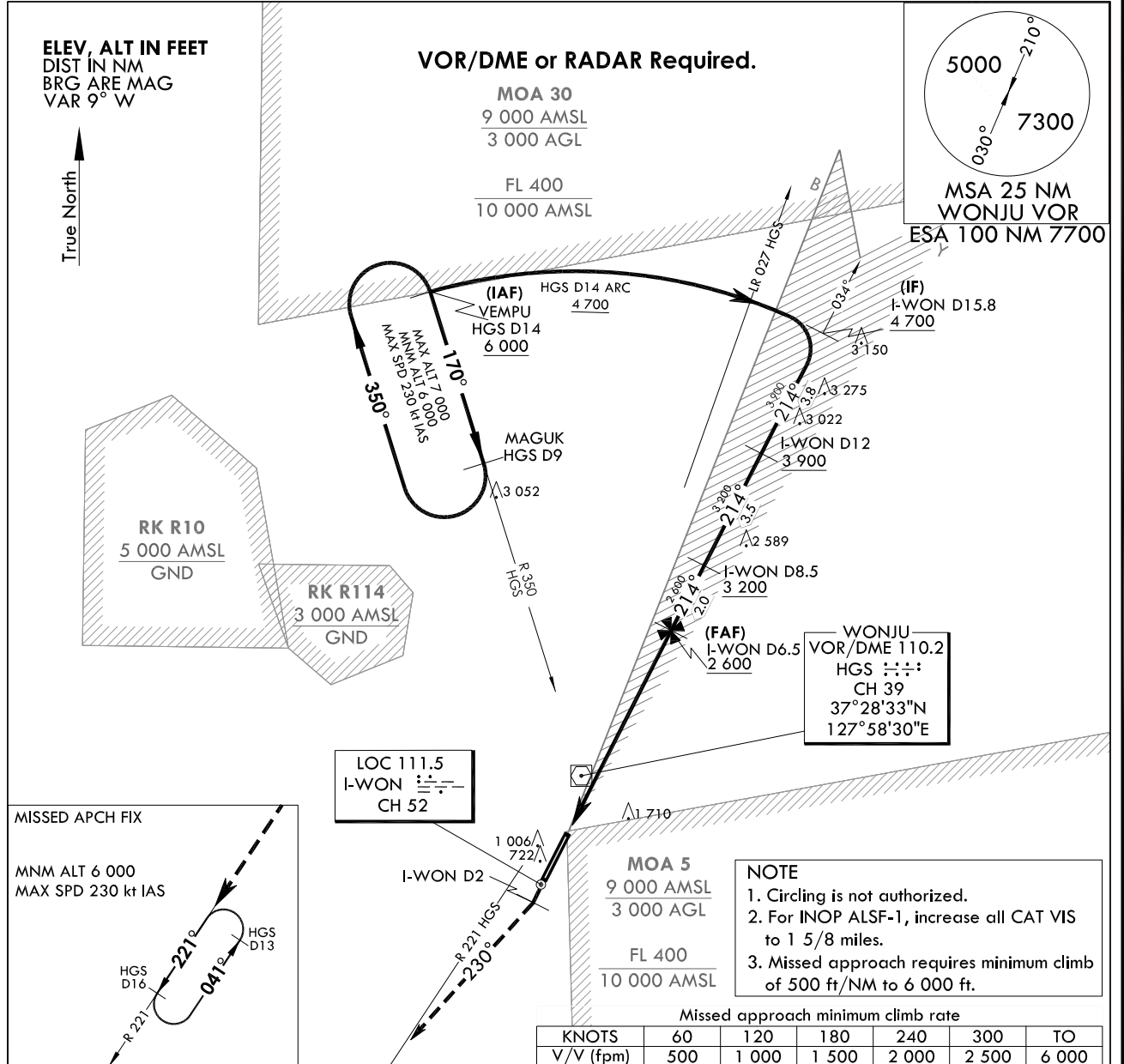
**INSTRUMENT  
APPROACH  
CHART**

**AERODROME ELEV 330 ft**  
HEIGHTS RELATED TO  
RWY 21 ELEV TDZ 330 ft

WONJU APP	130.2
WONJU TWR	234.4 255.0
	126.2 236.6
	265.5

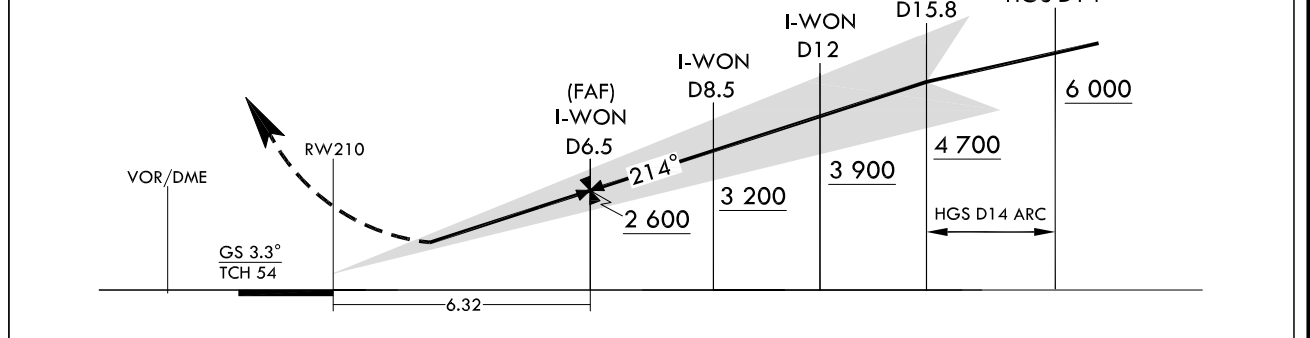
**WONJU/Wonju (RKNW)  
ILS RWY 21**

Note : Approach and circle to land under U.S. TERPS.



NOTE : Use I-WON DME when on the localizer course.

**TRANSITION ALT 14 000**  
**TRANSITION LVL FL 140**



CATEGORY	A	B	C	D
S-ILS 21		905-1¼	575(600-1¼)	

Change : New procedure.

**INTENTIONALLY**

**LEFT**

**BLANK**



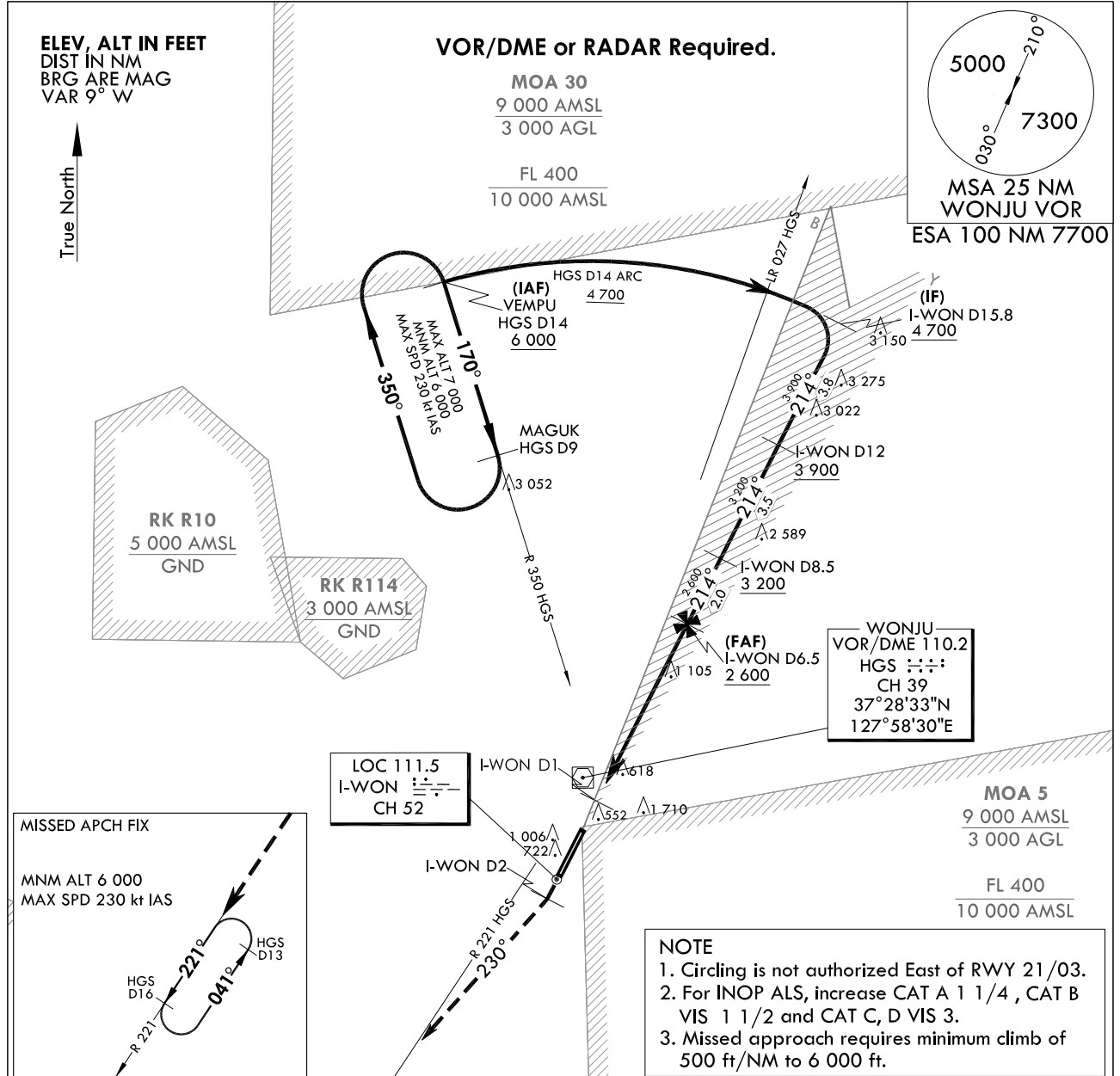
**INSTRUMENT  
APPROACH  
CHART**

**AERODROME ELEV 330 ft**  
HEIGHTS RELATED TO  
RWY 21 ELEV TDZ 330 ft

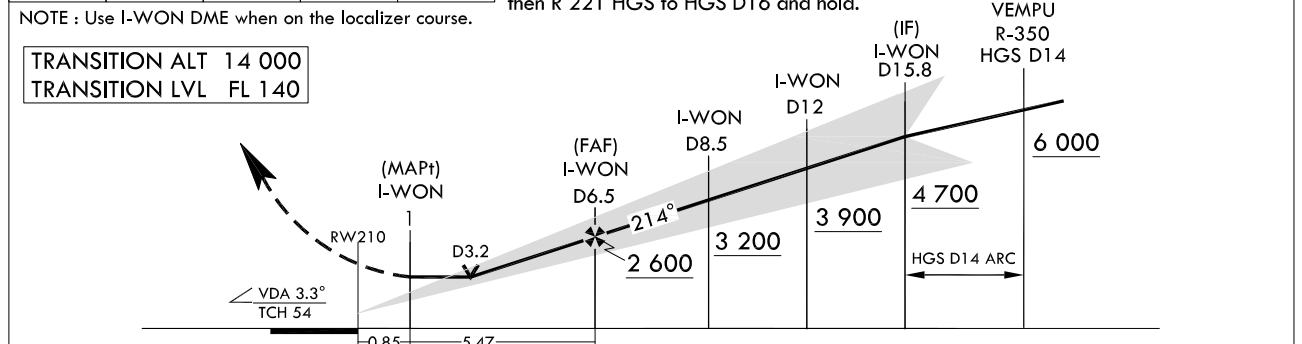
WONJU APP	130.2
WONJU TWR	126.2
	234.4 255.0
	265.5

**WONJU/Wonju (RKNW)  
LOC/DME RWY 21**

Note : Approach and circle to land under U.S. TERPS.



**MISSED APPROACH**  
Climb to 6 000 ft via HDG 214° to I-WON 2 DME and right turn HDG 230° to intercept R 221 HGS, then R 221 HGS to HGS D16 and hold.



CATEGORY	A	B	C	D
S-LOC 21	1 420/40 1 090(1 100-¾)	1 420/55 1 090(1 100-1)	1 420-2½ 1 090(1 100-2½)	
CIRCLING	1 440-1¼ 1 110(1 200-1¼)	1 440-1½ 1 110(1 200-1½)	1 780-3 1 450(1 500-3)	2 060-3 1 730(1 800-3)

Change : Amended phrase(½→2½).

**INTENTIONALLY**

**LEFT**

**BLANK**

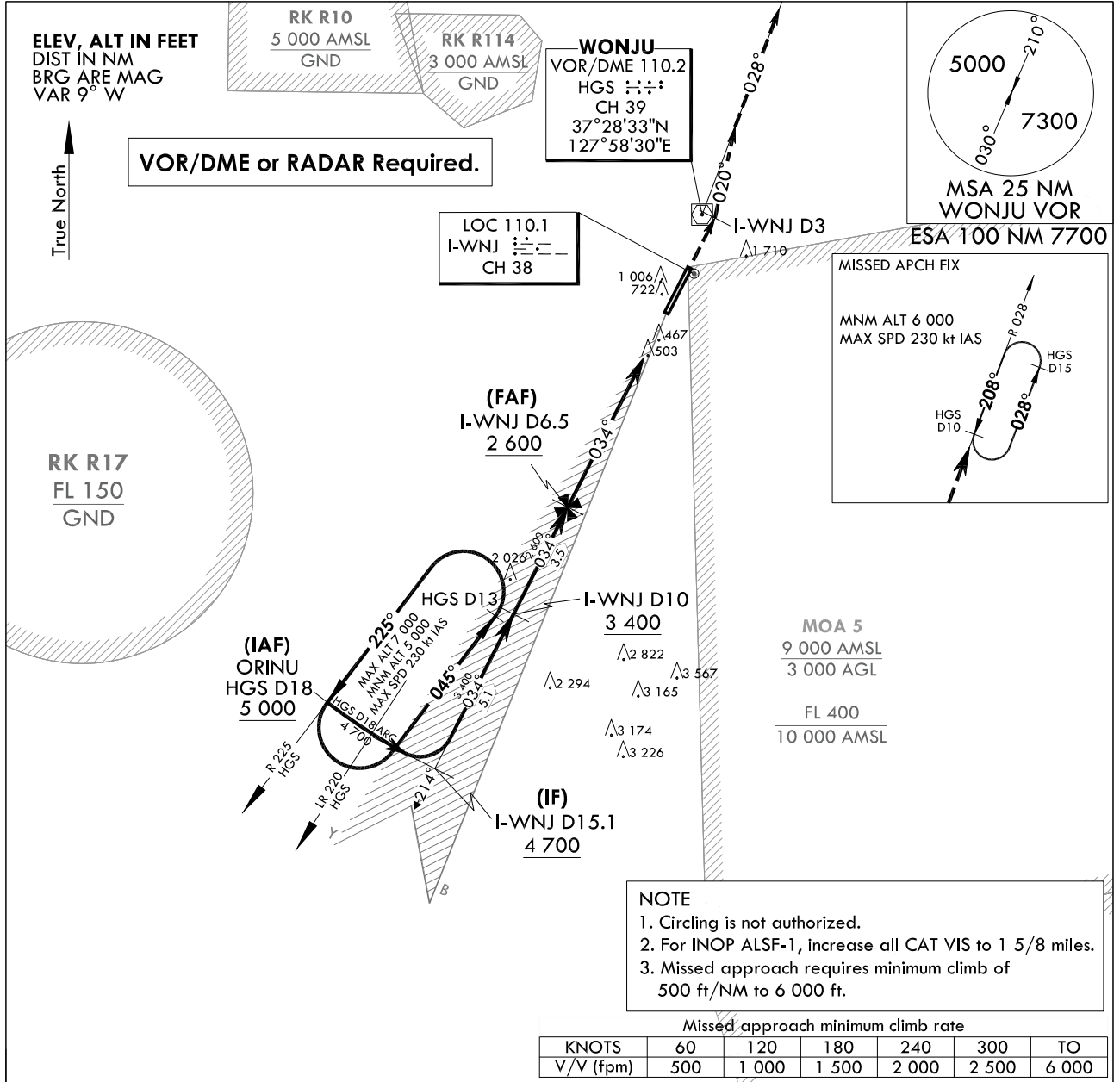
**INSTRUMENT  
APPROACH  
CHART**

**AERODROME ELEV 330 ft**  
HEIGHTS RELATED TO  
RWY 03 ELEV TDZ 325 ft

WONJU APP	130.2	234.4	255.0
WONJU TWR	126.2	236.6	265.5

**WONJU/Wonju(RKNW)  
ILS Y RWY 03**

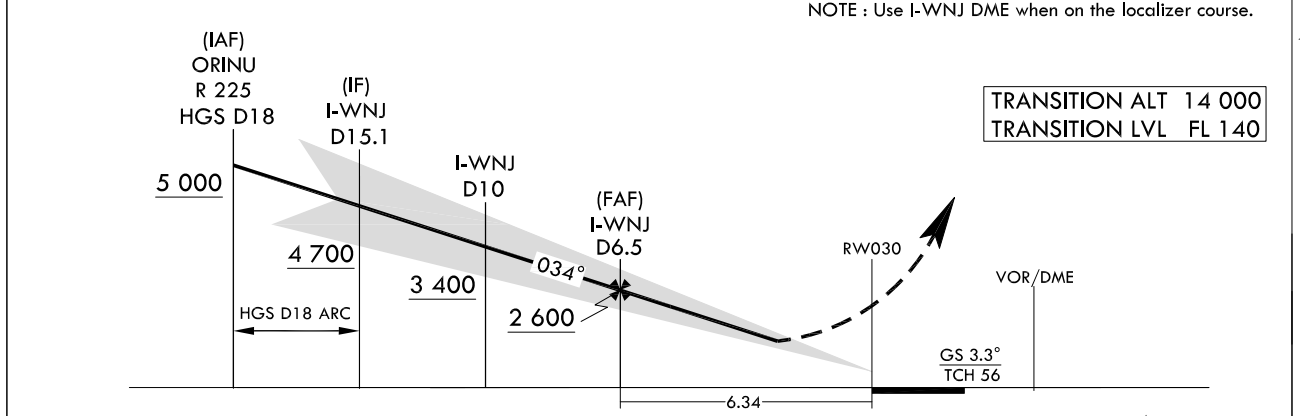
Note : Approach and circle to land under U.S. TERPS.



**MISSED APPROACH**  
Climb to 6 000 ft via HDG 034° to I-WNJ 3 DME and left turn HDG 020° to intercept R 028 HGS, then R 028 HGS to HGS D10 and hold.

HDG 034°    I-WNJ D3    HDG 020°    R 028 HGS    R 028 HGS D10 6 000

NOTE : Use I-WNJ DME when on the localizer course.



CATEGORY	A	B	C	D
S-ILS 3		872-1¼	547(600-1¼)	

Change : Withdrawal of information for VGSI.

**INTENTIONALLY**

**LEFT**

**BLANK**

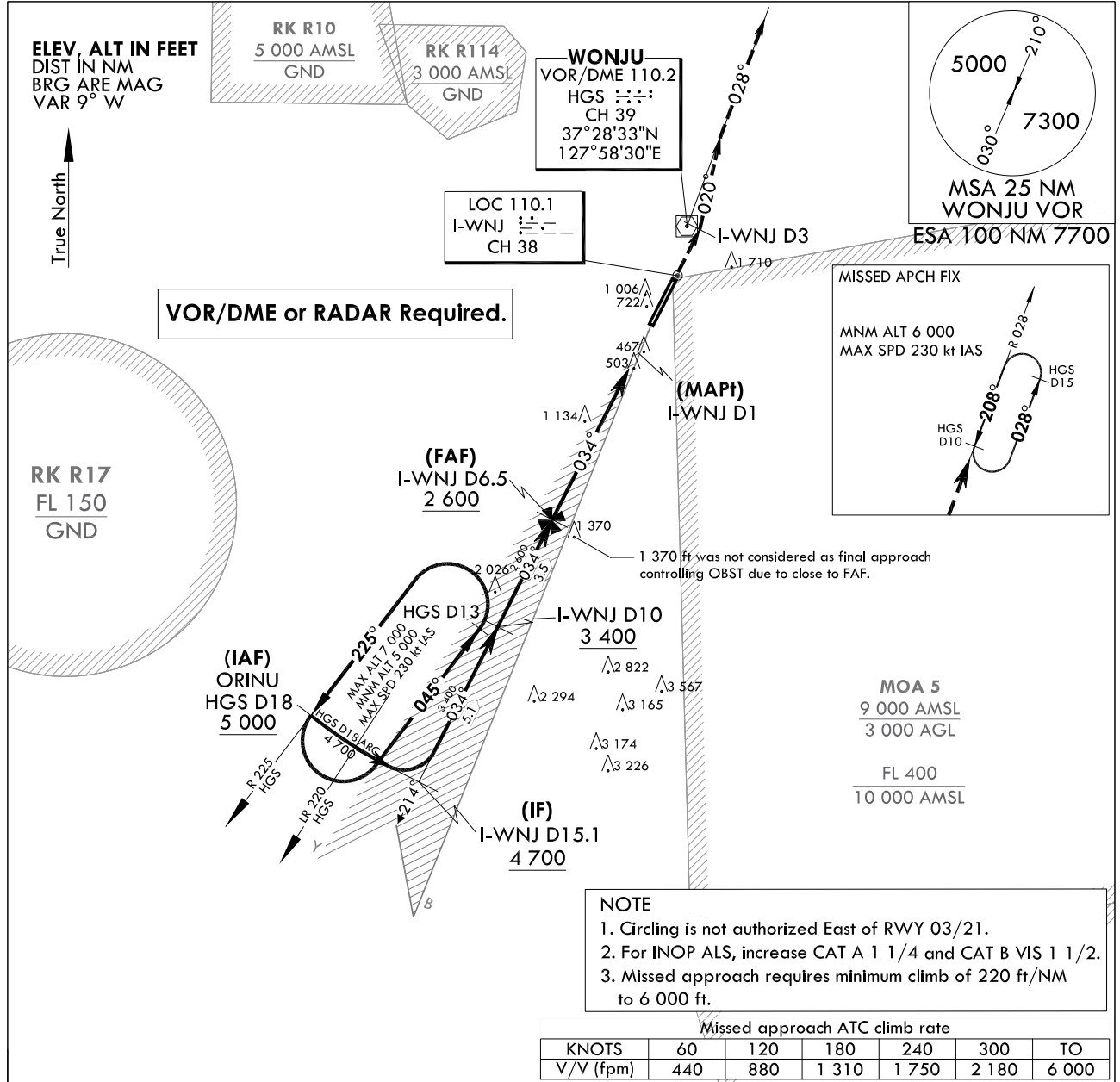
**INSTRUMENT  
APPROACH  
CHART**

**AERODROME ELEV 330 ft**  
HEIGHTS RELATED TO  
RWY 03 ELEV TDZ **325 ft**

WONJU APP	130.2	234.4	255.0
WONJU TWR	126.2	236.6	265.5

**WONJU/Wonju(RKNW)  
LOC/DME Y RWY 03**

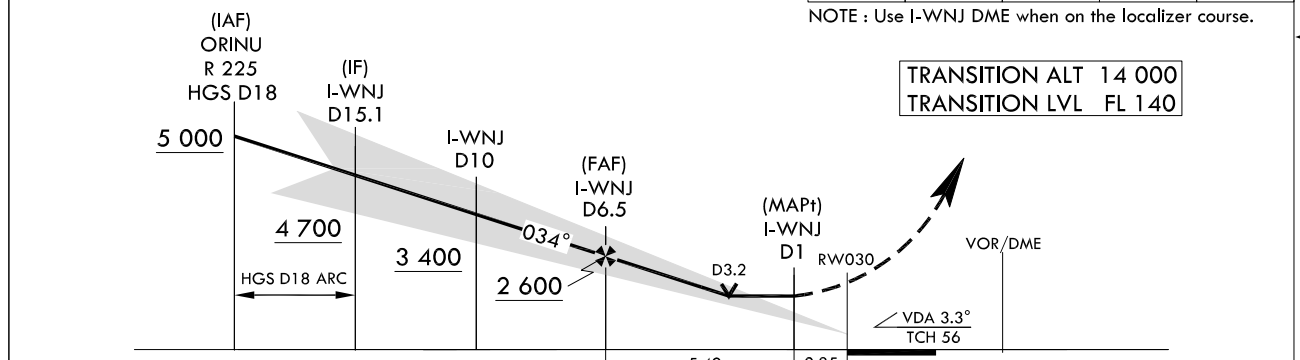
Note : Approach and circle to land under U.S. TERPS.



- NOTE**
1. Circling is not authorized East of RWY 03/21.
  2. For INOP ALS, increase CAT A 1 1/4 and CAT B VIS 1 1/2.
  3. Missed approach requires minimum climb of 220 ft/NM to 6 000 ft.

**MISSED APPROACH**

Climb to 6 000 ft via HDG 034° to I-WNJ 3 DME and left turn HDG 020° to intercept R 028 HGS, then R 028 HGS to HGS D10 and hold.



CATEGORY	A	B	C	D
S-LOC 3	1 440/40 1 115(1 200-3/4)	1 440/55 1 115(1 200-1)	1 440-3 1 115(1 200-3)	
CIRCLING	1 440-1 1/4 1 110(1 200-1 1/4)	1 440-1 1/2 1 110(1 200-1 1/2)	1 780-3 1 450(1 500-3)	2 060-3 1 730(1 800-3)

Change : Withdrawal of information for VGSI.

**INTENTIONALLY**

**LEFT**

**BLANK**